



SPECIAL FEATURES

- STAINLESS STEEL CASE
- ECONOMICAL VERSION
- STANDARD FOLLOWED IN GENERAL EN 837-1

APPLICATIONS

OIL, WATER, PNEUMATICS, HYDRAULICS, PUMP, COMPRESSORS, DIESEL ENGINES AND GASEOUS / LIQUID MEDIA THAT WILL NOT OBSTRUCT THE PRESSURE SYSTEM.



SPECIFICATIONS

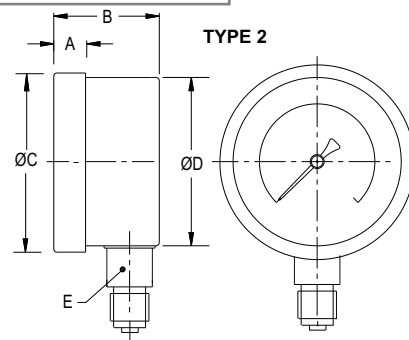
STANDARD VERSION : 40 mm, 50 mm, 63 mm and 100 mm

Accuracy	: ±1.6% of F.S. (For NS 63 mm & 100 mm)
	: ±2.5% of F.S. (For NS 40 mm & 50 mm)
Ambient temperature	: - 20°C to 65°C
Process temperature	: Max. 120°C
Operating pressure range	: 75% of Scale Value
Over pressure limit	: ≤ 100 bar : 125% of Max. Scale Value
	: > 100 to ≤ 600 bar : 115% of Max. Scale Value
	: > 600 to ≤ 1600 bar : 110% of Max. Scale Value

Case & Bezel	: AISI 304 SS (Push fit type)
Socket	: Copper Alloy
Bourdon	: Copper Alloy
Movement	: Copper Alloy
Joints	: Alloy Brazing / Soldering

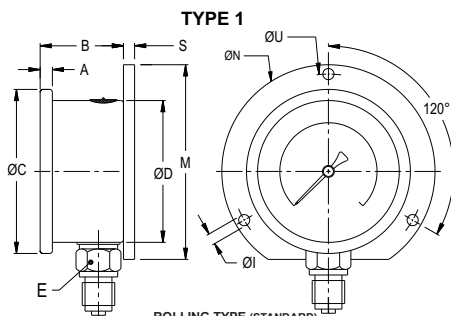
Dial	: Aluminum, black graduation on white background
Pointer	: Black coloured, Fixed.
Window	: Sheet Glass

Temperature effect:
The variation of indication caused by effects of temperature is to be calculated by below formula; which is to be added in the specified accuracy while measurement :-
Formula : $\pm 0.04 \times (t_2 - t_1) \%$ of F. S.
where t_1 = reference temperature (+20°C) and t_2 = ambient temperature in °C.

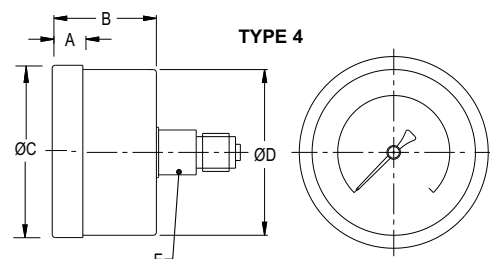


NS	A	B	ØC	ØD	E	Weight in gram (With Box)
50	10	29	53	52	A/F 17	140.0
63	10	29	63	62	A/F 17	180.0
100	12.5	35.5	100	98	A/F 19	390.0

DIMENSIONS - STANDARD VERSION



NS	A	B	ØC	ØD	E	S	ØN	ØI	ØU	M	Weight in gram (With Box)
63	6.5	30	68	62.5	A/F 14	5	88	5	76	80	195.0
100	7	35.5	110	100	A/F 17	6	134	6	118	128	465.0



NS	A	B	ØC	ØD	E	Weight in gram (With Box)
40	8.5	27	42.5	41.5	A/F 11	85.0
50	10	29	53	52	A/F 17	165.0
63	10	29	63	62	A/F 17	190.0

Notes : • Drawings are not to scale. • All Dimensions are in mm. • NS = Nominal Size.

